



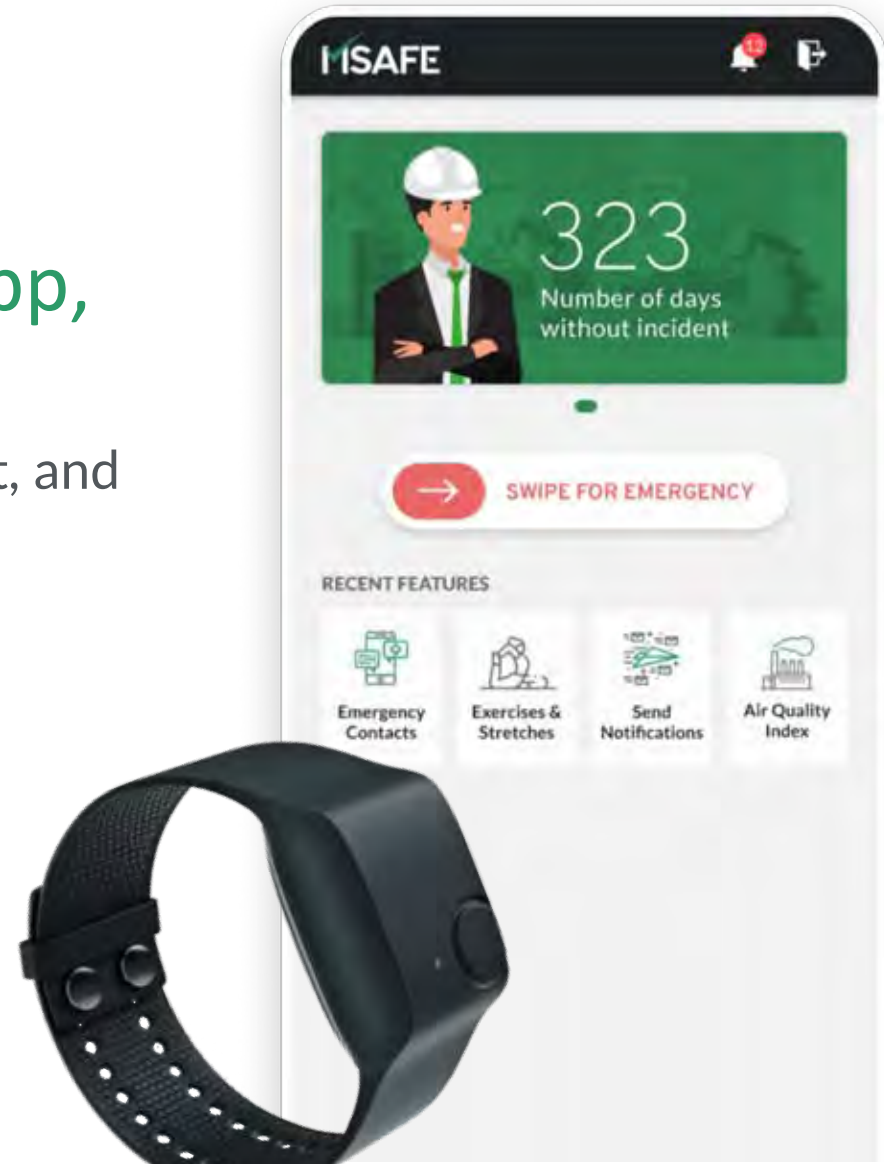
MACHINE VISION

- ✓ Smart Machines
- ✓ Smart Maintenance
- ✓ Smart People

The smart, work-flow-based EHS app, with optional IoT based device

Now leverage AI and ML to monitor, measure, audit, and review safety & health-related issues.

EXISTING CUSTOMERS



COVERING ALL THE THREE COMPONENTS

ENVIRONMENT

- Air Quality Index
- Heat Stress Index
- UV Rays Index
- Noise Pollution Index
- Carbon Footprint Calculator



HEALTH

- Stretches and exercises
- Heartbeat calculator
- Body temperature
- Employee fall detection
- Pulse rate
- Step tracker



SAFETY

- Compliance Recordkeeping
- Audit Management
- Risk Management
- Corrective & Preventive Actions
- Hazardous Materials Management
- Incident Management
- Industrial Safety Management
- Inspection Management
- Occupational Health Management
- Waste Management
- Document Management
- Training Management



ONE APP WITH SOLUTIONS



AVAILABILITY OF REPORTS
ON THE GO

REAL-TIME MONITORING
OF INCIDENTS/ACCIDENTS

IoT WEARABLE FOR
WORKERS' HEALTH

UNIFIED PLATFORM
(Across various IoT devices)



OSHA AND OTHER
COMPLIANCE CHECK

LONE WORKER DETECTION
THROUGH IoT DEVICE

IN-APP EMERGENCY
ASSISTANCE & ALERTS

WORKERS HEALTH &
WELLBEING

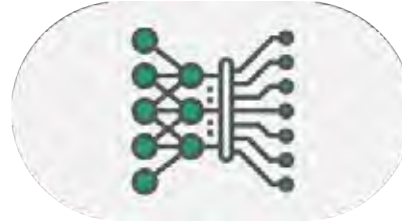
PRODUCT FEATURES



Unified platform
(compatible across IoT
devices)



Optional IoT wearable
device



Preventive action through
machine learning



Reports and
dashboard



Data-driven
analytics



Cloud-based software
(SaaS)



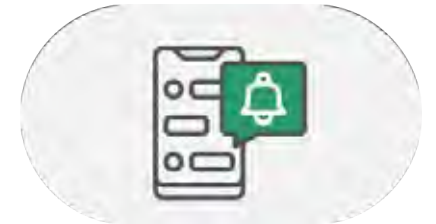
Monitor safety KPIs &
compliance



Prioritize workforce
training



Deliver safety alerts &
warnings



Faster resolution of safety
problems

COMPATIBLE WITH OTHER DEVICES & PLATFORMS



DEVICE AGNOSTIC

Device-agnostic design aims to offer a seamless experience across many devices and systems without the need for special adaptations.



API INTEGRATION WITH OTHER PLATFORMS

API integrations with other applications to automate tasks and generate reports. This ensures a smooth and continuous communication between various applications.



CONNECT WITH OTHER WEARABLES

Integration of other EHS Wearable Devices like safety jackets, fitness trackers, Smart Helmet etc.

MindCheck

Check your levels of Stress, Anxiety and Depression, and the contributing factors underlying them.

Individual Stress Test

At the end of the test you will be given a score and a personalized report with recommendations.

SECURITY



SECURE INFRASTRUCTURE

The AWS infrastructure puts strong safeguards in place to help protect your privacy. All data is stored in highly secure AWS data centers. All Msafe data is encrypted in transit and at rest.



MONITORING

With 24x7 operational support and monitoring, EHS Insight data is protected under the watchful eye of security experts.



MULTITENANCY PLATFORM

The Msafe solution's multitenant platform ensures users only access their own organization's information.



AUTHENTICATION AND ENCRYPTION

Msafe security keeps up with changes occurring on the Internet. TLS 1.2 for browser encryption helps us keep our customer's data safe. To enhance data security our customers can enable two-factor authentication (2FA).



NETWORK ACCESS CONTROL

Msafe leverages several security technologies and services to increase privacy and control network access. Multiple layers of security provide a significant roadblock to hackers.



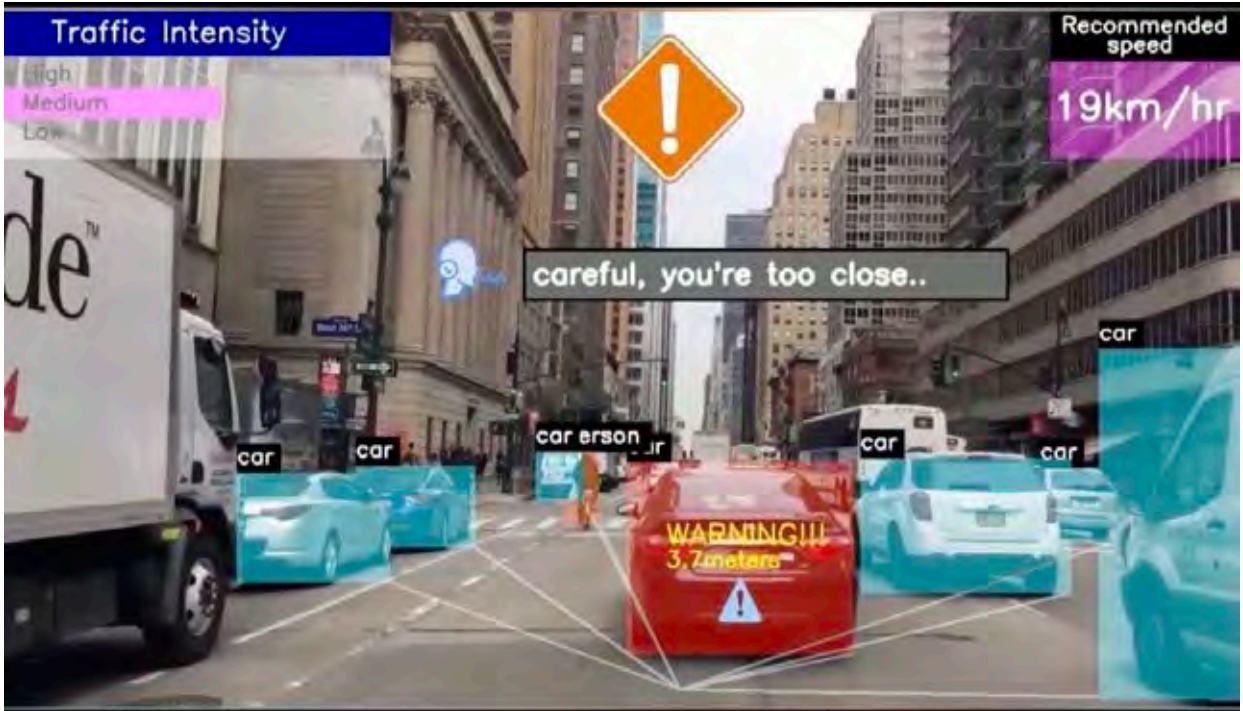
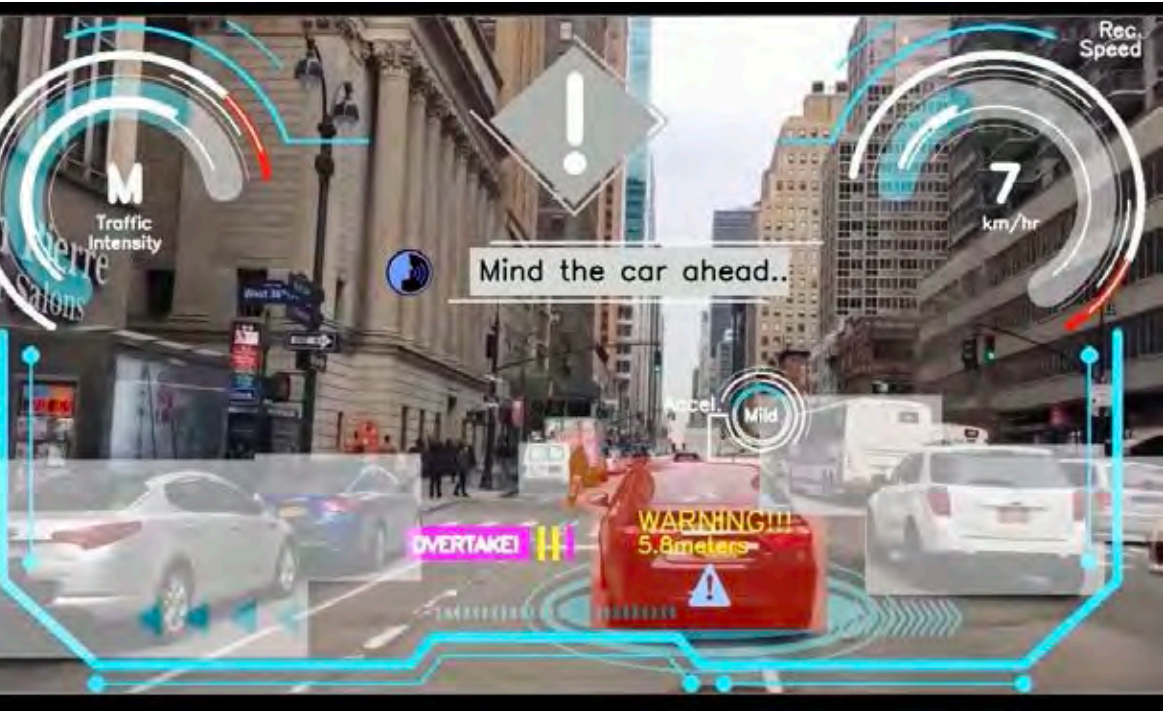
GENERAL DATA PROTECTION REGULATION (GDPR)

Many organizations must comply with the General Data Protection Regulation (GDPR), an EU regulation that expands the protection of personal data of EU citizens.

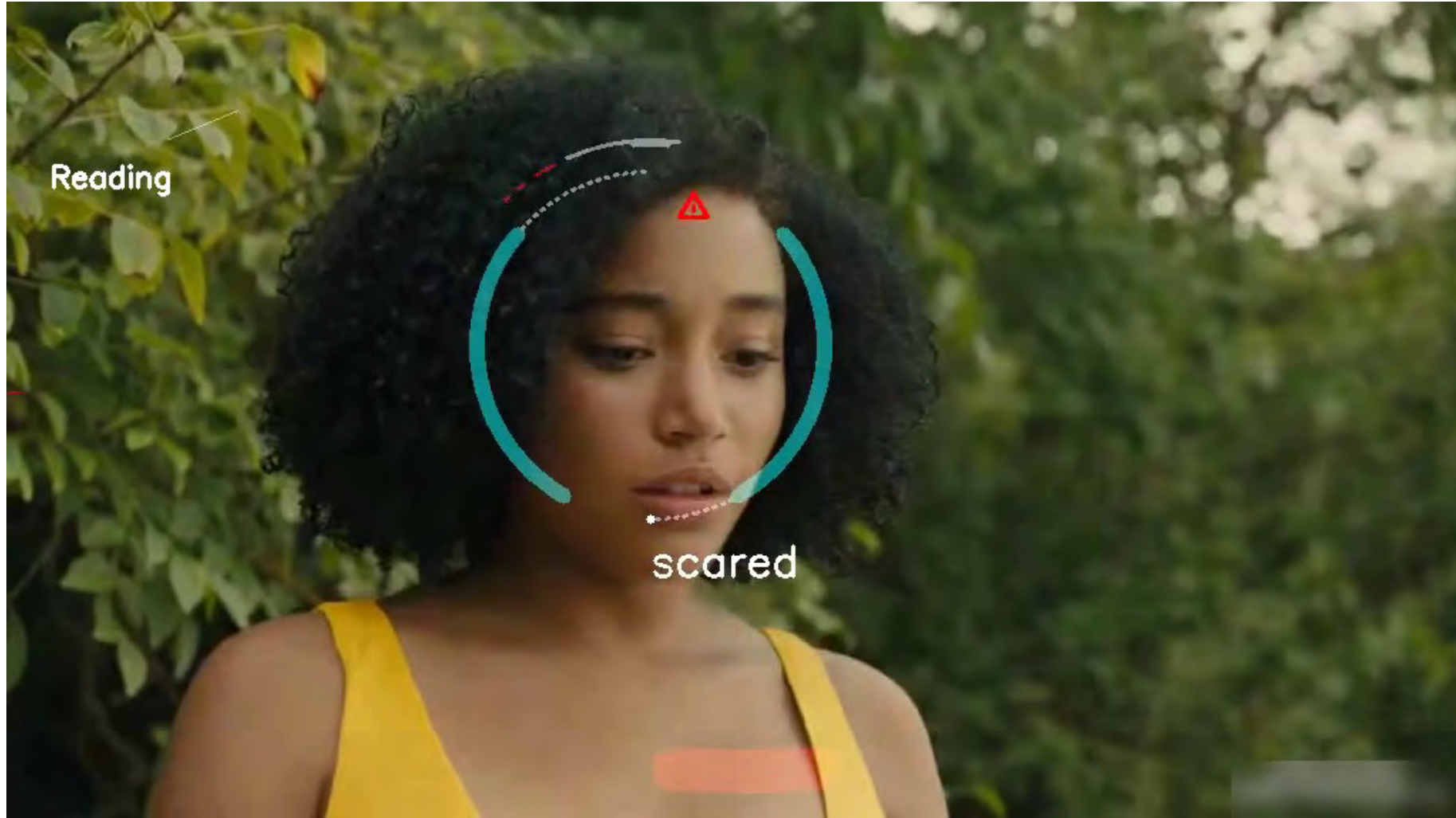


DRIVER CO PILOT 4.0 (C.E.E.N.T.I.A.)

Connected Electronic Environment For Navigation And Traffic Intelligence Assistance.



FACIAL EXPRESSION RECOGNITION



PPE IDENTIFICATION

Analyze images from your on-premises cameras at scale to automatically detect if people are wearing the required protective equipment, such as face covers (surgical masks, N95 masks, cloth masks), head covers (hard hats or helmets), and hand covers (surgical gloves, safety gloves, cloth gloves).

- Trigger timely alarms or notifications
- Reminder to wear PPE
- Send notifications to area owner
- Weekly monthly reports of violations



OTHER CAMERA BASED DETECTION

Detects

- Fire
- Smoke
- Sparks
- Unauthorized person

Send Triggers

- Notifications
- Machine Switch OFF
- Emergency Alerts



DETAILED DETECTION TYPES



Checks on workers, their hard hats, high-vis jackets, gloves, and other safety equipment, as well as checks on site signage, barriers, fire safety equipment, first aid kit, and anything else.



1. Visual Reasoning
2. 3D Modeling
3. Detecting Small Objects

VR SAFETY



Road Accident Safety



Blast

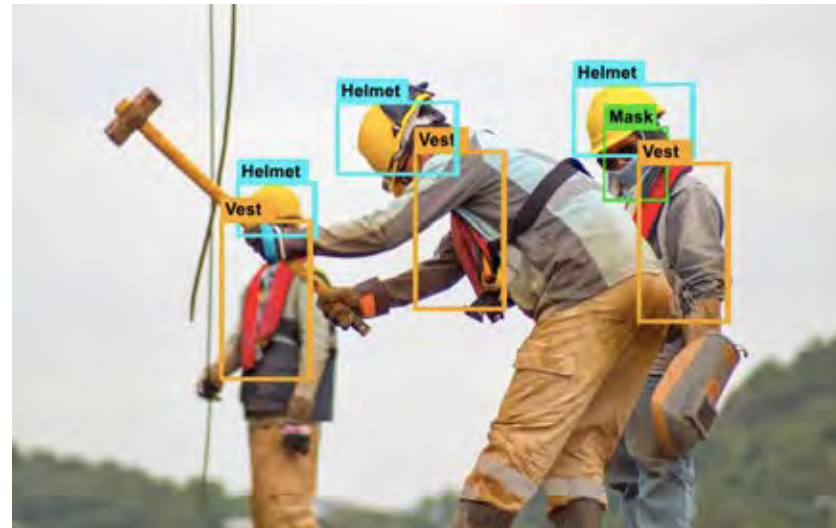


Confined Space

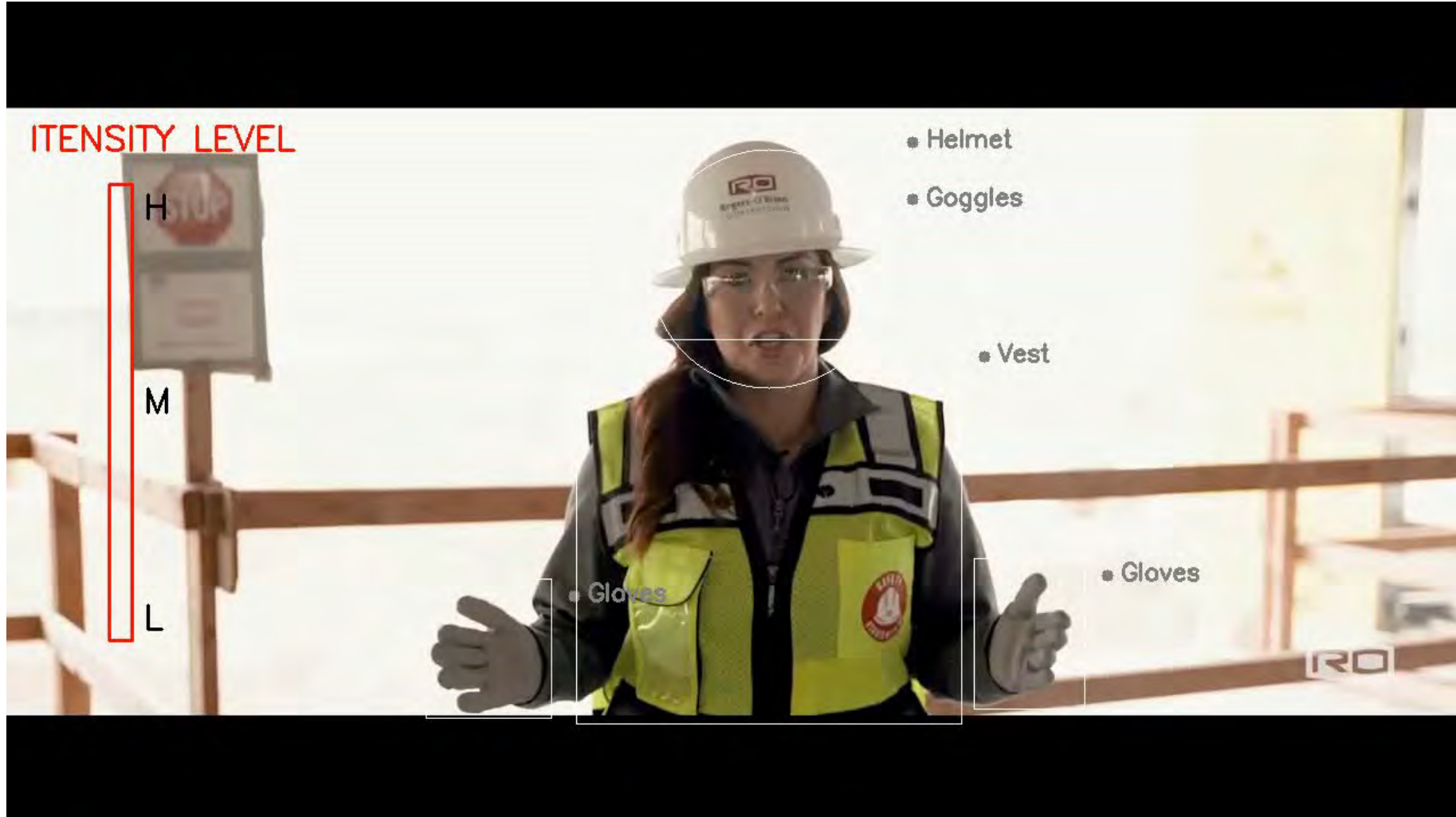


PPE Violation Detection

Using existing IP and CCTV cameras and Computer Vision Technology, PPE Violation Detection System can identify if a person is wearing a complete PPE Kit to prevent health and safety risks.



PPE DETECTION



INTRUSION DETECTION



Intrusion Detection

The camera will identify the person entering the restricted area through any means and can send trigger to stop the robotic arms from working immediately.

Detects

Fire | Smoke | Sparks
Unauthorized person

Send Triggers

Notifications with photos
Machine Switch OFF
Emergency Alerts

FIRE/SMOKE DETECTION

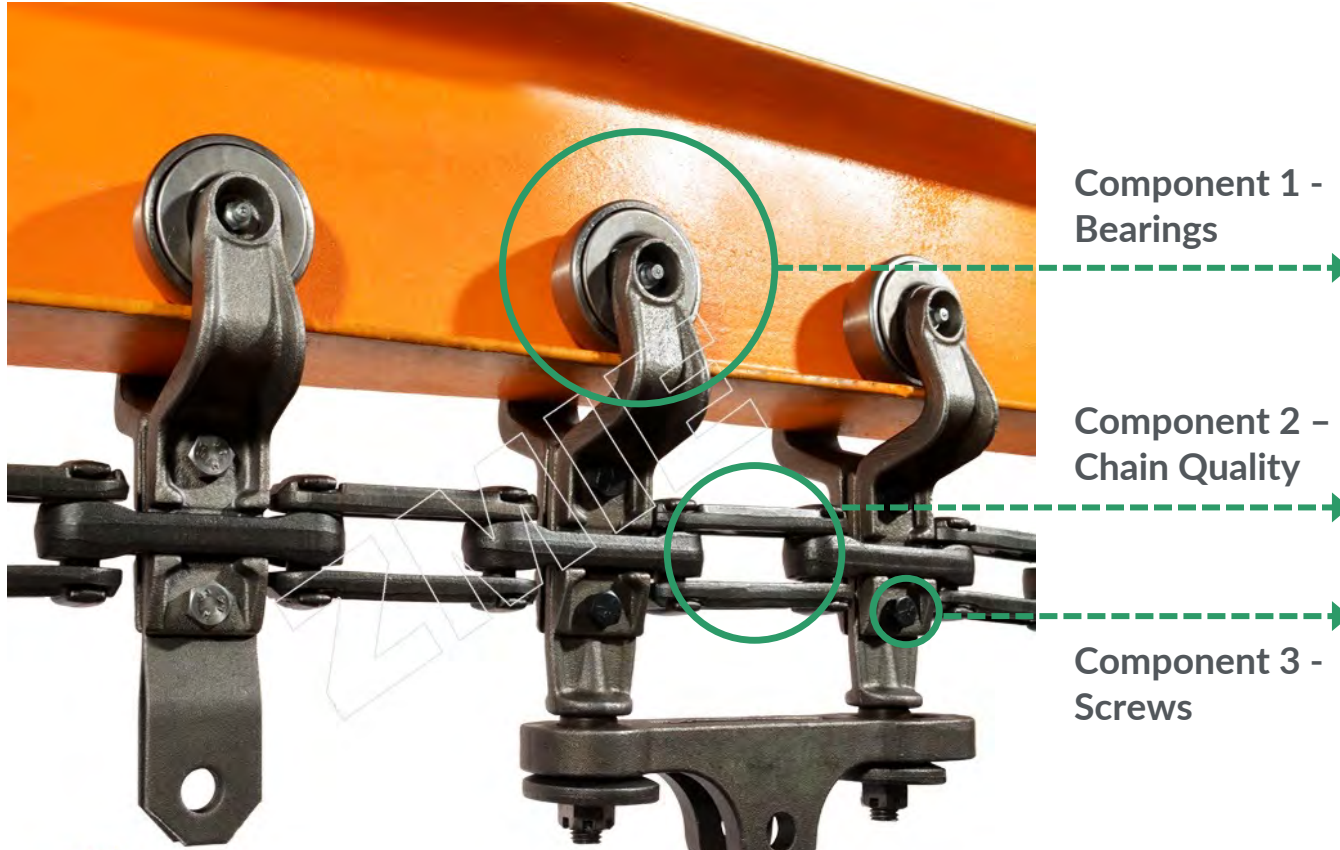


FIRE THREAT DETECTION



SMOKE DETECTION

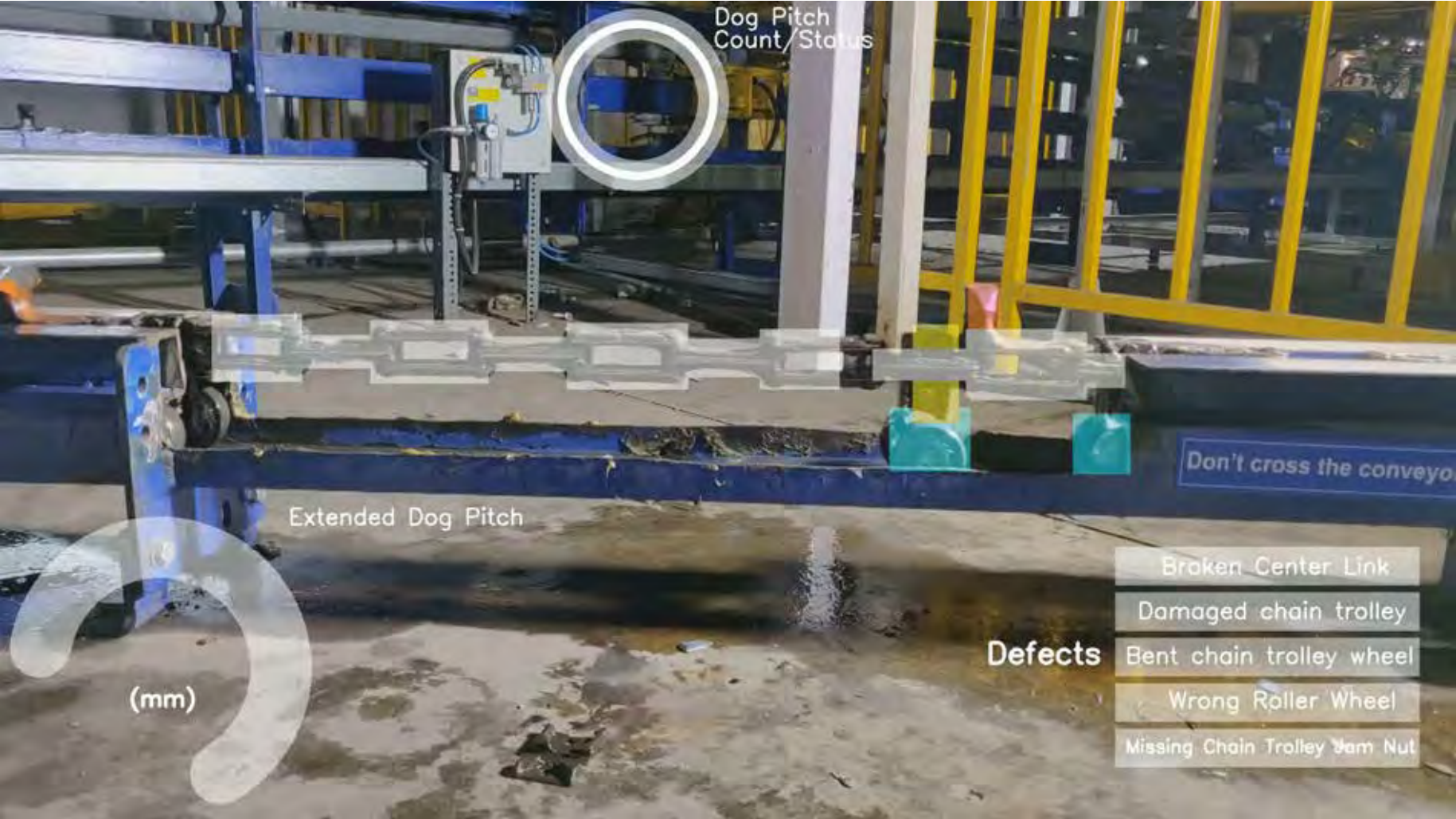
SMART MAINTENANCE – CONVEYOR BELTS



Conveyor chain breakage detection with predictable maintenance over the period of time.

- In motion object inspection
- Chain break detection
- Chain length measurement
- Bolt missing
- Alarm/signal
- Reports shared with photos
- Triggers/notifications

CONVEYOR MAINTENANCE



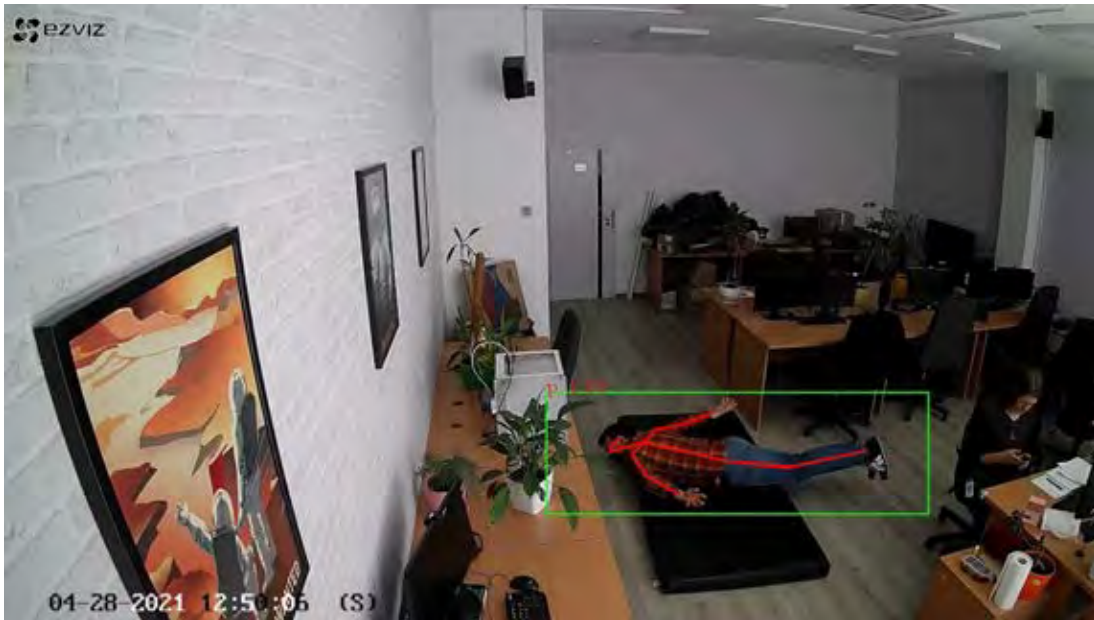
TYPES OF QUALITY DETECTION THROUGH CAMERA



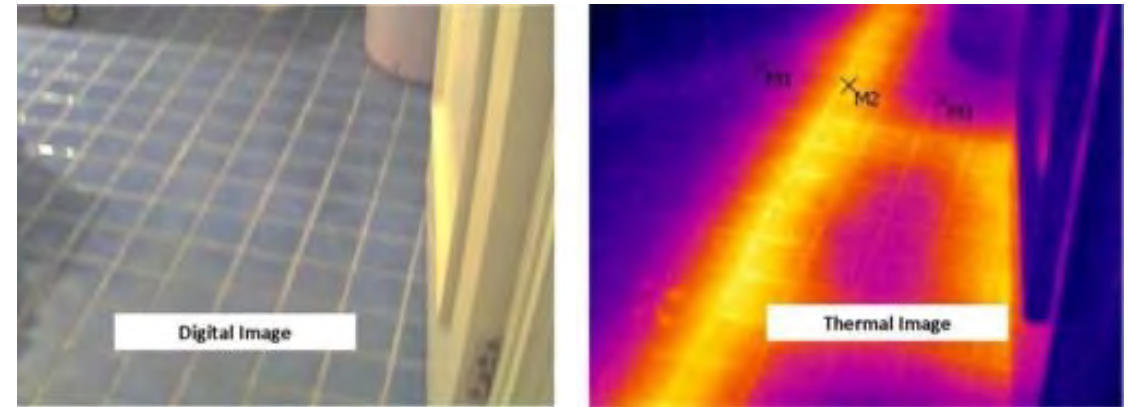
Types of quality detection through camera:

- Cracks
- Breakage
- Length Variation
- Shape Detection
- Size Detection
- Missing Components
- Deviation from Standard Shape

FALL / WATER DETECTION

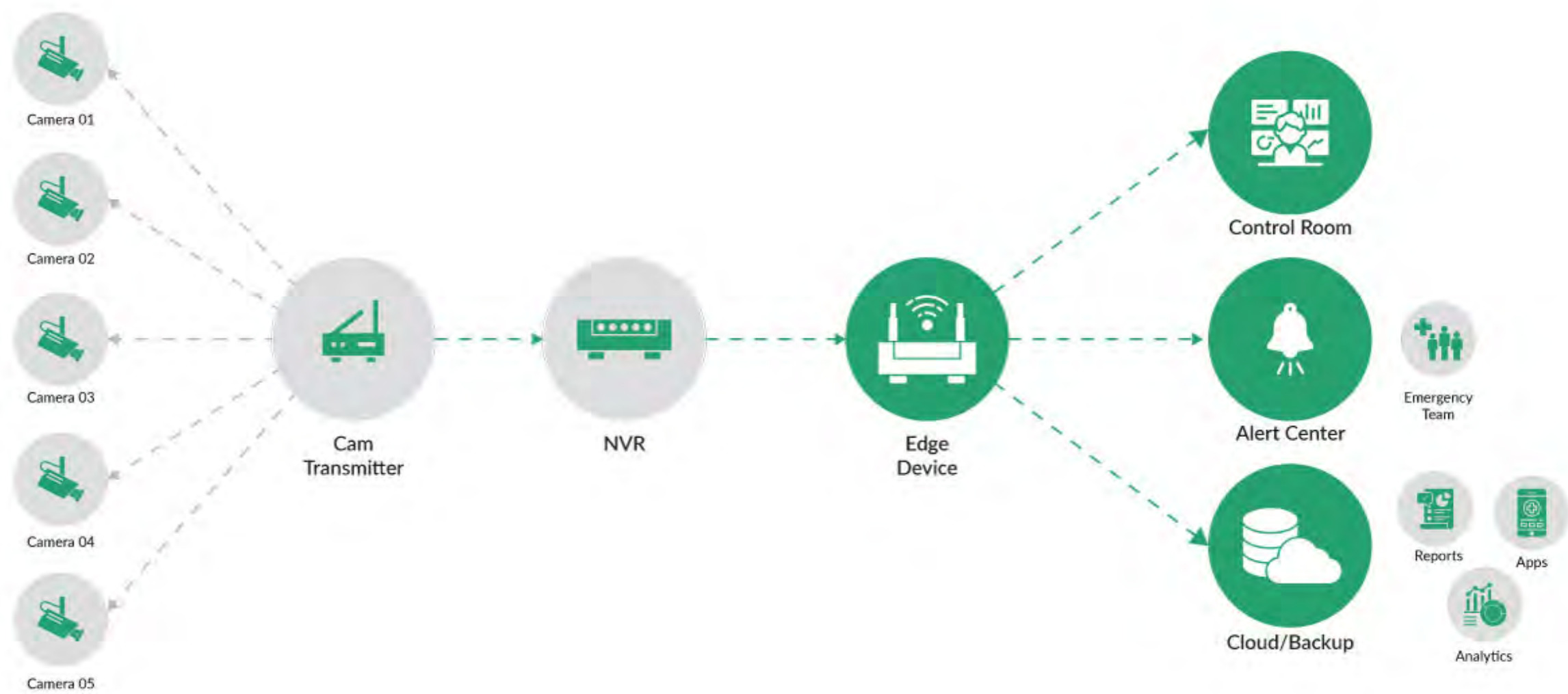


FALL DETECTION

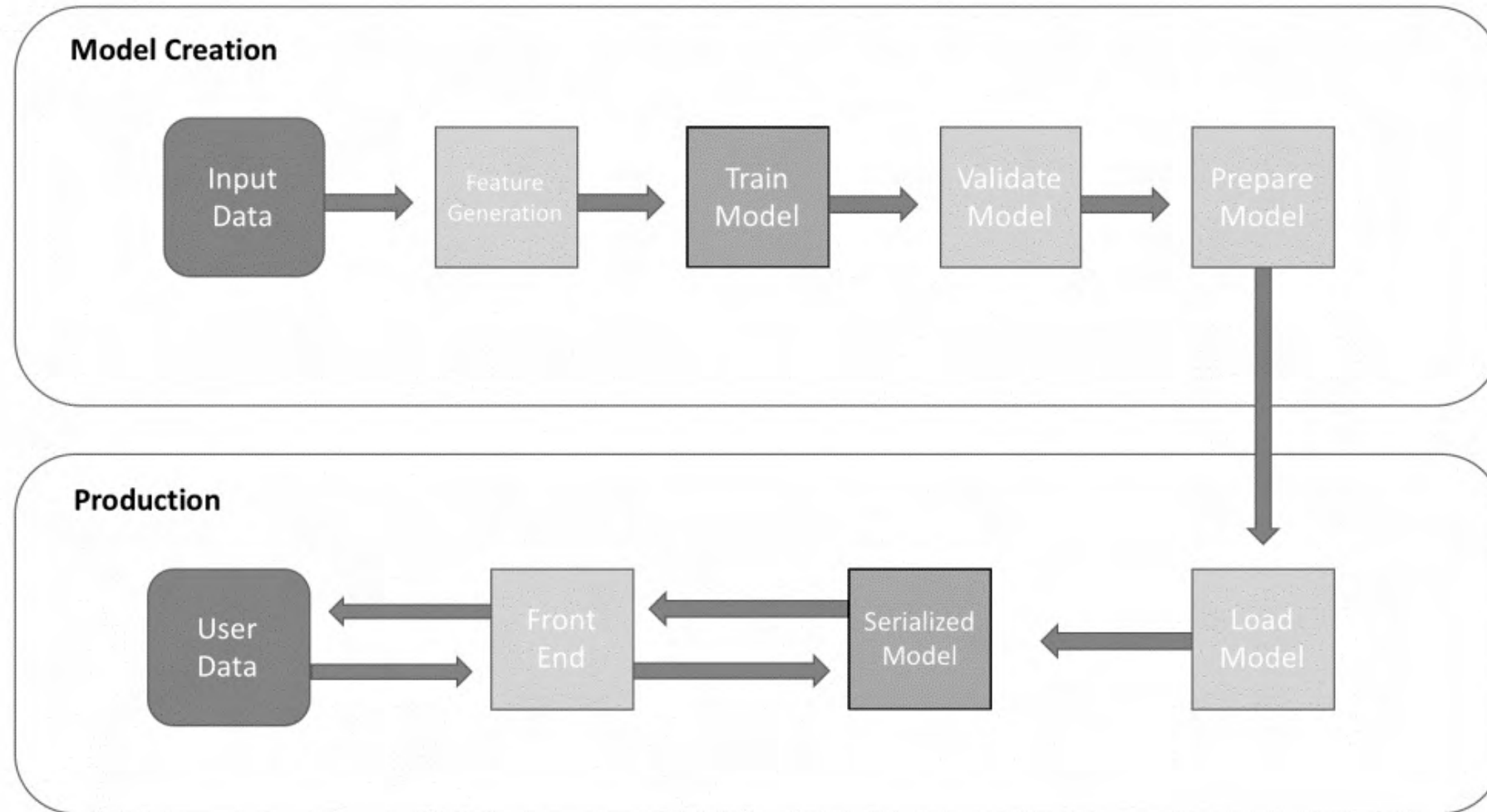


WATER /CHEMICAL SPILL DETECTION

ARCHITECTURE



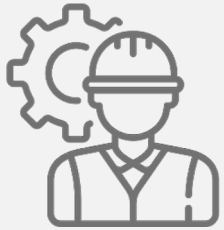
AI MODEL CREATION / UPDATION



THE TRACTION



The smart, work-flow-based EHS app, with optional IoT based device



50+
workers

ŠKODA | VOLKSWAGEN

ŠKODA AUTO Volkswagen India Private Limited

Industry:
Manufacturing



150+
scientists



L'ORÉAL

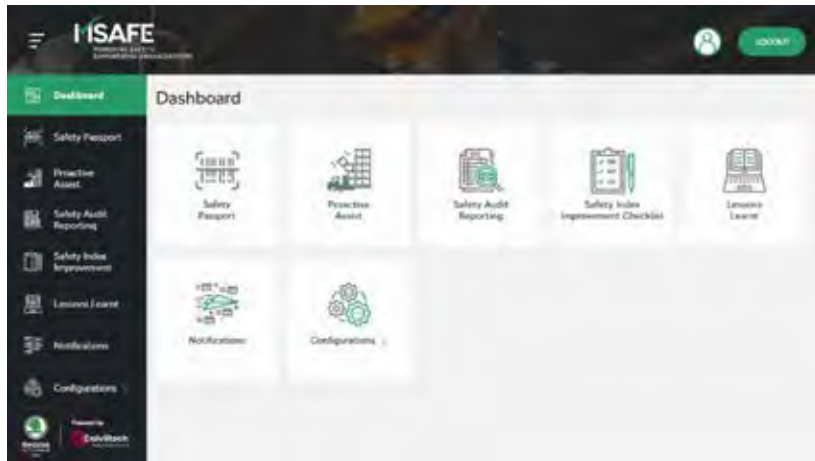
Industry:
Chemical Research

CASE STUDY



ŠKODA | VOLKSWAGEN

ŠKODA AUTO Volkswagen India Private Limited



Challenge

- Difficulty in tracking of the tasks assigned for safety
- Paper based safety incidents and audit reporting
- Time consuming process to create reports and graphs
- Difficulty in sharing and tracking the learning materials with workers

Solution

- Workers can see the assigned tasks and share real time updates
- Paperless incident reporting auditing and tracking
- 75% of the routine reports and graphs are generated through dashboard with data available online, hence time saving
- Videos, PDFs, JPEGs can be shared as a part of continuous learning to workers and can be tracked along with short quiz.

CASE STUDY



L'ORÉAL

Client One of the largest cosmetic manufacturing company



Challenge

- To reduce the number of incidents in the manufacturing plant
- To encourage personal information sharing with the administration team
- To prevent issues, and resolve issues faster

Solution

- Using MSafe all the incidents major or minor are reported using app installed on employees mobile.
- All the employees can report the issues (safety and engineering issues) and track the resolution of the same.
- App also helped employees in emergency condition to track and find exit gates.
- All the audit reports are done through mobile, making it paperless.

DISCOVER YOUR **BIGGEST COST**
TIME SAVING OPPORTUNITY

Callistus Moses

Founder & CEO

+1 437 559 9020 | +1 437 559 1027
callistus@msafesolutions.com

Scan ME

