



# SMART MANUFACTURING EXCELLENCE



# Corporate Overview

## FOUNDED:

1996, Canada

## OFFICES:

Canada (HQ), India,  
Mexico, USA.

## CLIENTS:

Small, Medium, &  
Large  
Manufacturers in 16  
Countries.

## SPECIALIZATION:

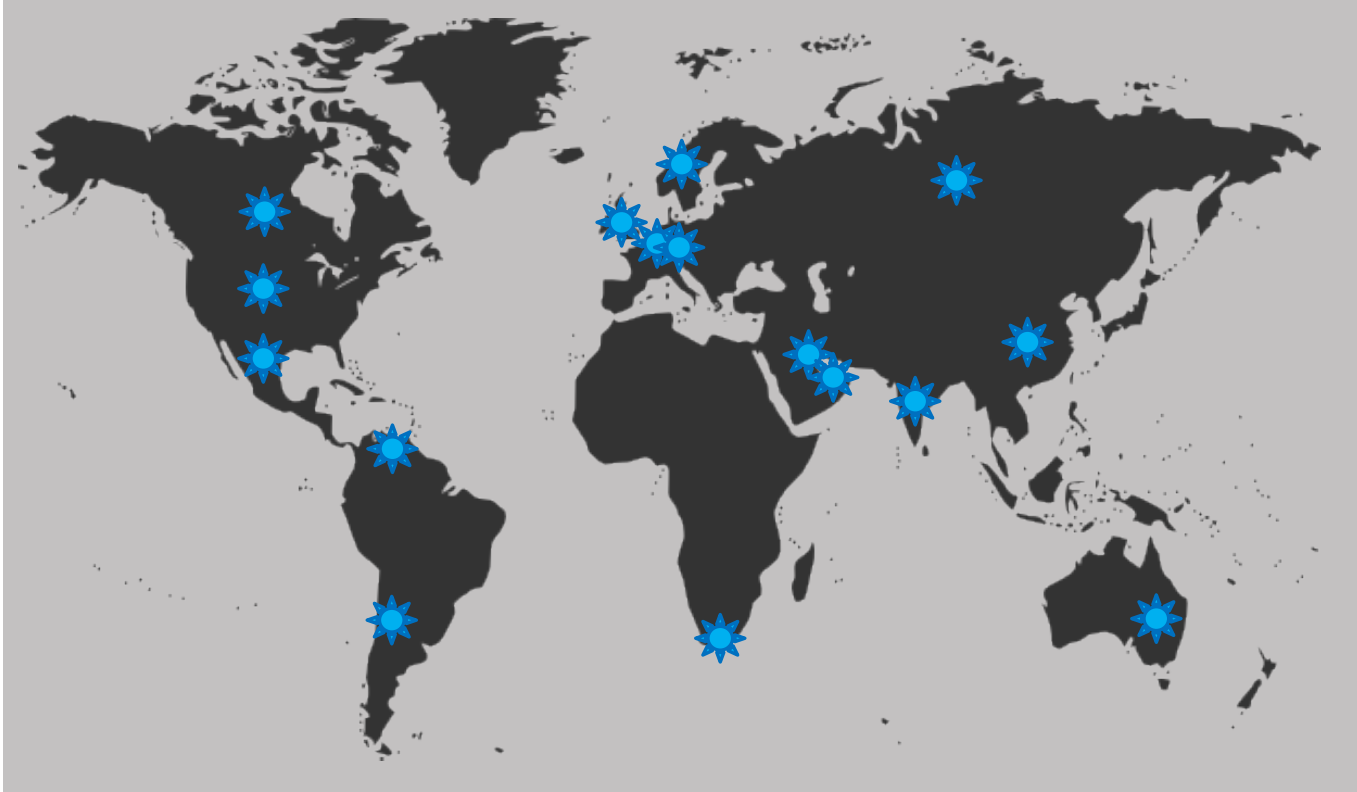
Digital Automation  
Solutions,  
Smart  
Manufacturing.





# Our **Global Smart Manufacturing Experience**

## 20+ YEARS' FIELD EXPERIENCE IN 16 COUNTRIES

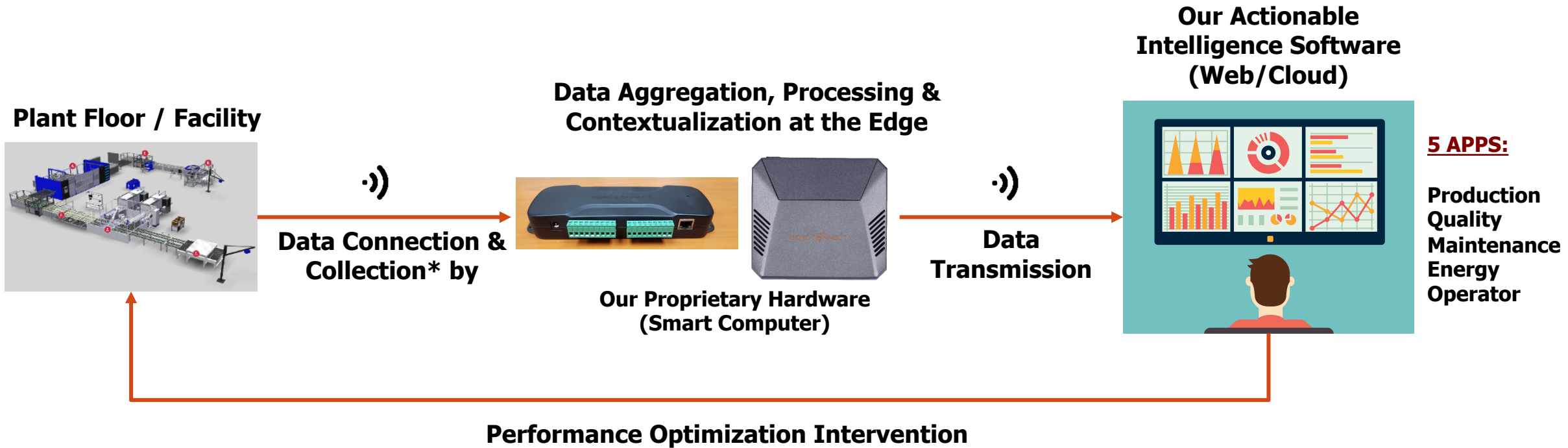


- ❖ 2 of the Top 5 Automotive OEMs, 200+ T1/T2/T3 Suppliers.
- ❖ One of the Largest Global Tractor Manufacturers.
- ❖ Top Food & Beverage Companies, Mexico & Canada.
- ❖ Global Pulp-Paper & Personal Care Leader, Mexico.
- ❖ Multiple Oil & Gas Companies in China, Russia.
- ❖ Multiple Water Utilities & Nuclear Power Plants.
- ❖ Leading Global Telecom Provider.
- ❖ Reputed Government Organizations, Canada.
- ❖ Large Steel Plant, Asia.
- ❖ Top Construction Firm, Asia.
- ❖ Leading Dairy Brand, Australia.
- ❖ Global Aerospace Leader, USA.



# Smart Manufacturing Solutions' Philosophy

**End-to-End, Agnostic, Performance Optimization in 5 Areas:  
ENERGY, PRODUCTION, QUALITY, MAINTENANCE, OPERATOR**



\*- Meters, Sensors, Human Input, Controllers, Systems (SCADA, Historian, MES), Devices, Machines, Databases.



# Our Smart Manufacturing Solutions **by Manufacturer Size**

## LARGE / ENTERPRISE



**Energy Performance Optimization (eC4)**



**Enterprise Gateway**

**Maintenance/Asset Performance Optimization**

## SMALL & MEDIUM

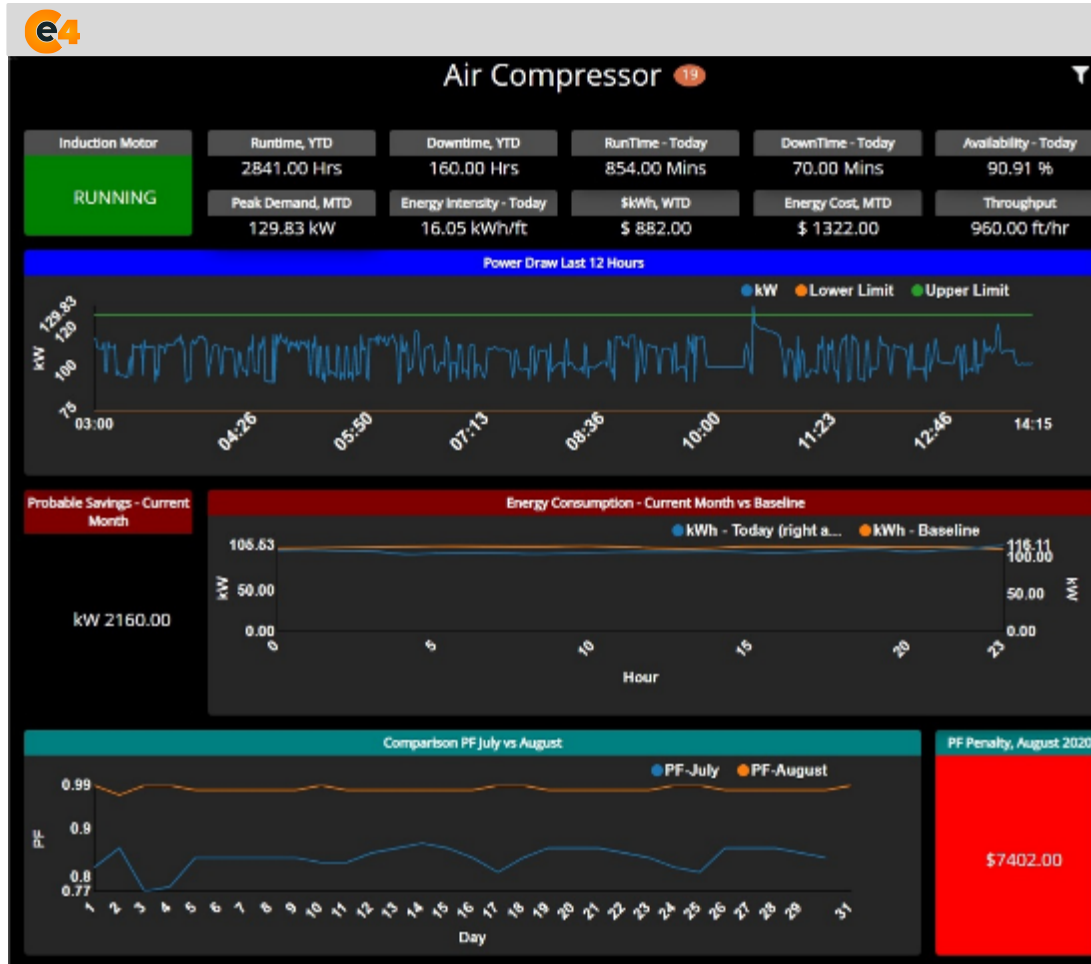


**Smart Manufacturing Bundle of 4 apps:**

- **Energy, Maintenance, Quality, Production.**
- **Minimal Investment.**
- **Minimal/No IT infrastructure & Resources.**
- **Plug-n-play – no code, < 1 day impl.**
- **Simple-to-Use, Implement, Maintain.**
- **200+ auto parts suppliers – quality.**



# eC4 for Unified Production Energy Optimization

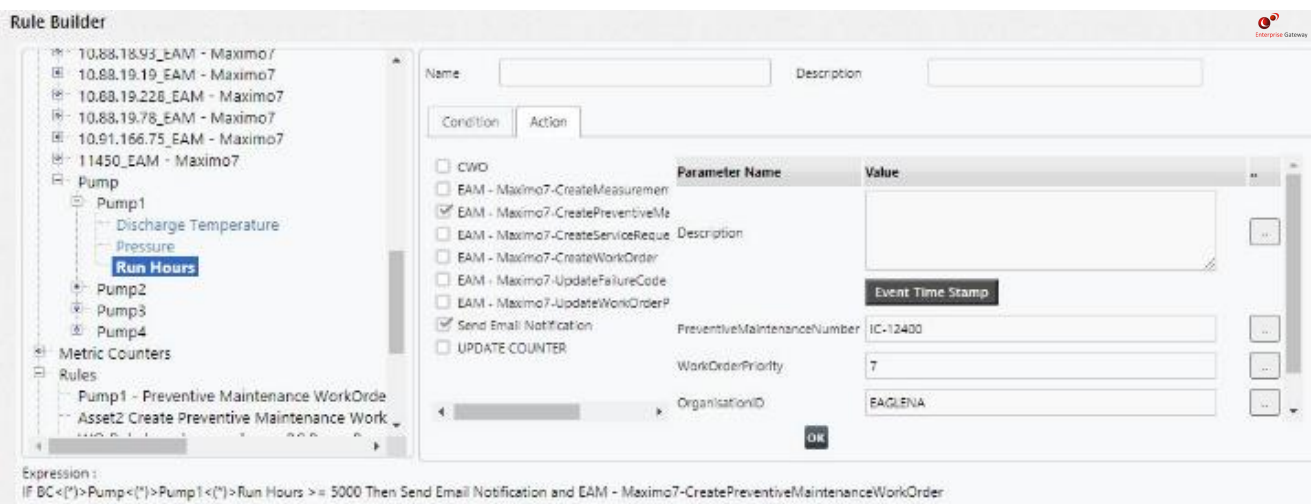


- When, Where, How Efficiently: Machine-Level.
- Water, Air, Gas, Electricity, Steam, Renewables.
- Understand & Optimize \$kWh per Product Made.
- Reduce Utility Penalties: Power Quality Insights.
- Track GHGs, Achieve Corporate Energy Targets.
- Automated Energy Baseline & Benchmarking.
- Implement Energy-Saving Strategies.
- **Use Cases:** Automotive, Food, Government, IT.
- <https://fifthgentech.com/ec4.html>



# Enterprise Gateway for Maintenance Optimization

- Integration with Maintenance Systems.
- Automated Work Order Generation.
- Maintenance-As-Required.
- Intelligent Rules Engine & Library.
- Optimize Asset Reliability.
- 'Next Failure' Prediction.
- Reactive to Proactive Maintenance.
- **Use Cases:** Automotive, Utilities, Food & Beverage, Mining, Personal Care, Aerospace, Steel.
- [https://fifthgentech.com/enterprise\\_gateway.html](https://fifthgentech.com/enterprise_gateway.html)





# BorgConnect<sup>®</sup> for Quality Performance Optimization

🏠 Inspection Batch

Batch ID : Accurate-115BR-18022019-1-2-3  
Process : PP1



24.99 <= 25 <= 25.01  
ID 25.030 0.005 (MM)

25.025 <= 25.03 <= 25.035  
ID 35.000 0.010 (MM)

34.99 <= 33 <= 35.01  
ID 35.020 0.005 (MM)

BORG CONNECT

- Zero Operator Errors/Omissions in Part QC Checks.
- Complete Traceability.
- Rejected Parts Intelligence.
- Digital In-Process & End-of-Line Part Quality Inspections.
- OEM-Supplier Integration.
- On-Time Supplier Delivery.
- Adherence with OEM QC Plans.

Show  Entries

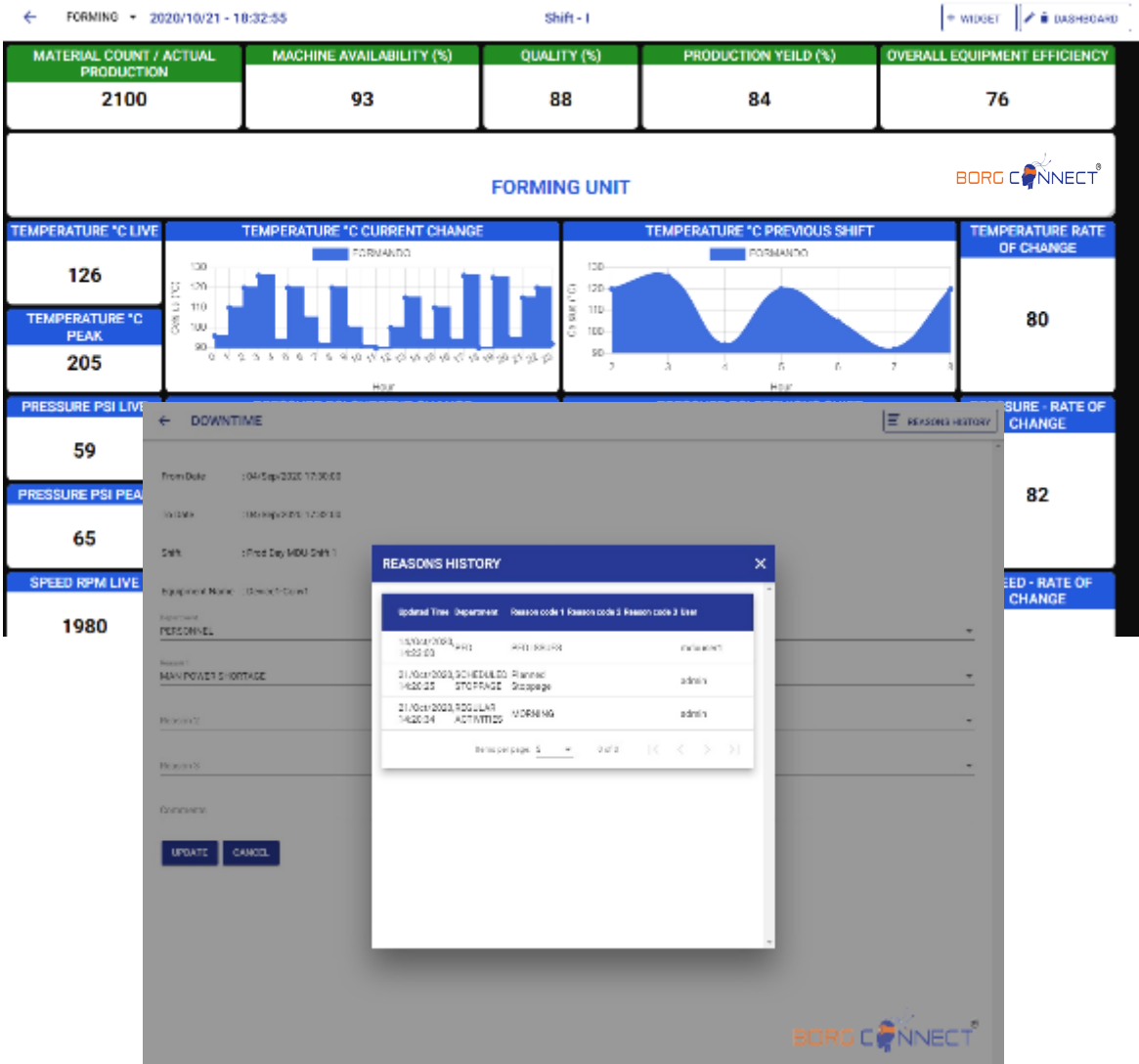
Month	Year	SupplierCode	Material	Week 1	Week 2
2	2022	PBSI	EN8-50MM DIA DRAWN BAR	1597/1600	1597/1597
2	2022	ABCI	EN32B-34.85DIA 364.5MM CL	250/281	220/281
4	2022	PBSI	EN8-50MM DIA DRAWN BAR	1597/1597	1597/1597
5	2022	CCMX	EN32B-34.85DIA 364.5MM CL	350/281	300/281

- **Use Cases:** Automotive (OEM & T1/T2/T3 Suppliers).
- [https://fifthgentech.com/quality\\_performance.html](https://fifthgentech.com/quality_performance.html)





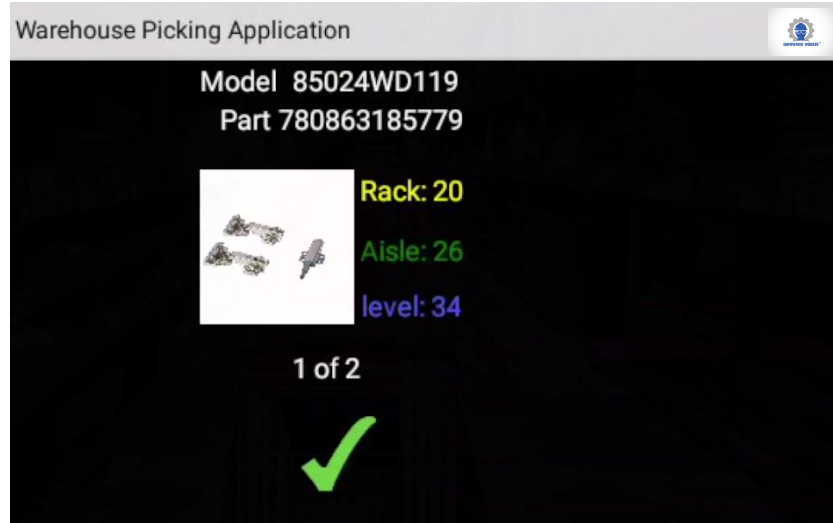
# BorgConnect<sup>®</sup> for Production Performance Optimization



- Real-time Unified Intelligence -Plant Floor Production.
- Elimination of Paper Records.
- Track KPIs: Waste, OEE, Downtime, etc.
- Understand & Classify Downtime Occurrences.
- Virtual Supervisor / Assistant.
- Smart Short Interval Control.
- **Use Cases:** Automotive, Food, Pulp-Paper, Personal Care.
- [https://fifthgentech.com/production\\_performance.html](https://fifthgentech.com/production_performance.html)



# Empowered Worker™: Operator Performance Optimization



- Guided Contextualized Intelligence using Wearables (e.g. Glass™), Augmented Reality, Machine Vision.
- Perform Complex Tasks 'Right the First Time'.
- Immediate Task Verification/Validation.
- Eliminate Errors, Rework & Omissions.
- Remote Maintenance Guidance & Operator Training.
- Customizable to End-User Requirements.
- **Use Case:** Automotive.
- [https://fifthgentech.com/empowered\\_worker.html](https://fifthgentech.com/empowered_worker.html)





20+ YEARS.  
ONE PURPOSE.  
**ENRICHING LIVES  
VIA INNOVATION!**

A black silhouette of a human head in profile, facing left. Inside the head, there is a green target pattern with concentric circles.

**5G Energy Ltd.**

**203 Colonnade Road, Suite 202, Ottawa, ON K2E 7K3, CANADA**

**[info@fifthgentech.com](mailto:info@fifthgentech.com) | [www.fifthgentech.com](http://www.fifthgentech.com) | +1-613-368-3809**

